

KID'S CORNER

Thanksgiving Mobile



It is time to make a Thanksgiving mobile!

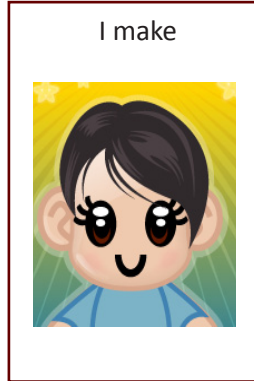
First

Grown-up reads



Then

I make



www.handsinautism.org

hands@iupui.edu

[www.facebook.com/](https://www.facebook.com/HANDSinAutism)

[HANDSinAutism](https://www.facebook.com/HANDSinAutism)

Tel: (317)944-8162

select option "0"

Suggestions for Grown-Ups

1. Cut out schedule and place on a velcroed board (for pull-off schedules) or laminate (for check-off schedules).
For more information, see **How-To Template: Schedules** (www.handsinautism.org)
2. Help with cutting or pre-cut shapes before an activity. Modify the schedule if needed.
3. **Have fun!**

You will need...

- ◇ Decoration schedule (see p. 2)
- ◇ Printed (and pre-cut if needed) shapes (see pp. 3-4)
- ◇ Yarn
- ◇ Metal hanger
- ◇ Scissors
- ◇ Glue


Christian Sarkine
Autism Treatment Center

Christian Sarkine Autism
Treatment Center
Department of Child
and Adolescent Psychiatry
1120 South Dr., Ste. 302
Indianapolis, IN 46202

<http://psychiatry.medicine.iu.edu/autism>

rileyhospital.org

Materials provided are **samples only!**
They may need to be individualized to meet the particular needs of a person with an ASD!



Time to Make Thanksgiving Mobile!

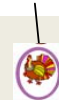
Cut out 12 ovals



Cut 6 pieces of yarn



Glue end of yarn to back of oval



Glue back of oval without yarn to back of oval with yarn



Tie yarn to metal hanger



Repeat until done



Finished!

