

KID'S CORNER



Thanksgiving Figures

It is time to make Thanksgiving figures!

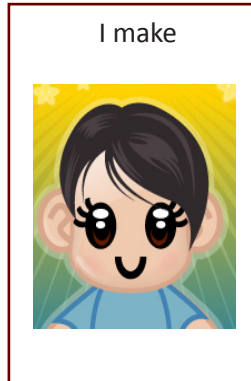
First

Grown-up reads



Then

I make



www.handsinautism.org

hands@iupui.edu

[www.facebook.com/](https://www.facebook.com/HANDSinAutism)

[HANDSinAutism](https://www.facebook.com/HANDSinAutism)

Tel: (317)944-8162

select option "0"

Suggestions for Grown-Ups

1. Cut out schedule and place on a velcroed board (for pull-off schedules) or laminate (for check-off schedules).
For more information, see **How-To Template: Schedules** (www.handsinautism.org)
2. Help with cutting or pre-cut shapes before an activity. Modify the schedule if needed.
3. Use the accompanying playbook and playbook video modeling (if needed).
4. **Have fun!**

You will need...

- ◇ Decoration schedule (see p. 2)
- ◇ Printed (and pre-cut if needed) shapes (see pp. 3-4)
- ◇ Scissors


Riley
Hospital
for Children
.....
Christian Sarkine
Autism Treatment Center

Christian Sarkine Autism
Treatment Center
Department of Child
and Adolescent Psychiatry
1120 South Dr., Ste. 302
Indianapolis, IN 46202

<http://psychiatry.medicine.iu.edu/autism>

rileyhospital.org

Materials provided are **samples only!**
They may need to be individualized to meet the particular needs of a person with an ASD!



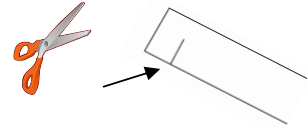
Time to Make Thanksgiving Figures!



Cut out figure



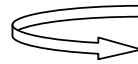
Cut a slit on each side of white strip



Wrap white strip behind figure and lock slits



Repeat until done



Finished!

