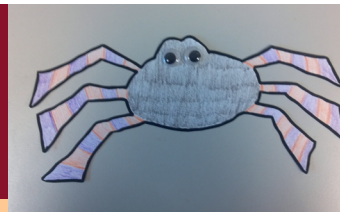


KID'S CORNER



Hanging Spider

It is almost Halloween and time to make a spider!

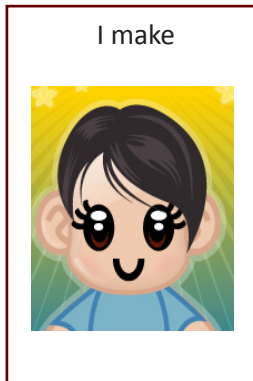
First

Grown-up reads



Then

I make



www.HANDSinAutism.org

hands@iupui.edu

Tel: (317)274-2675

Fesler Hall (IUPUI)

1120 South Dr., Ste. 302

Indianapolis, IN 46202

Suggestions for Grown-Ups

1. Cut out decoration schedule and (if available) place on a velcroed board (for pull-off schedules) or laminate (for check-off schedules). For more information, see How-To Template: Schedules (www.handsinautism.org)
2. Help with cutting or pre-cut shapes before an activity. Modify the schedule if needed.
3. Please use double-sticking tape to fix shapes on a pumpkin.
4. **Have fun!**

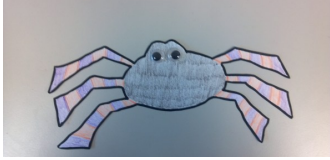
You will need...

- ◇ Decoration Schedule (see p. 2)
- ◇ Printed (and pre-cut if needed) shape (see p. 3)
- ◇ Tape
- ◇ Scissors
- ◇ Glue
- ◇ Crayons (do not use if using Elmer's glue for googly eyes), colored pencils, or markers
- ◇ 2 googly eyes
- ◇ String (fishing line works best for a transparent look)

View/download these and other templates at www.handsinautism.org/kidscorner.html



Materials provided are **samples only!**
They may need to be individualized to meet the particular needs of a person with an ASD!



Time to make a Hanging Spider

Color spider 

Cut out spider 

Glue two googly eyes on spider 

Tape string to back of spider's head 

Tape other end of string to ceiling 

Finished!

