

KID'S CORNER



Gingerbread Man

It is time to make a gingerbread man!

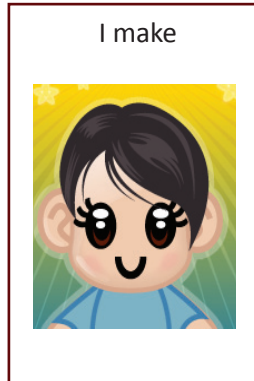
First

Grown-up reads



Then

I make



www.handsinautism.org
hands@iupui.edu
Tel: (317)274-8162

select option "0"

Suggestions for Grown-Ups

1. Cut out decoration schedule and place on a velcroed board (for pull-off schedules) or laminate (for check-off schedules).
For more information, see **How-To Template: Schedules** (www.handsinautism.org)
2. Help with cutting or pre-cut shapes before an activity. Modify the schedule if needed.
3. For sturdiness, foam sheets or construction paper can be used. Trace shapes and then cut.
4. **Have fun!**

You will need...

- ◇ Decoration schedule (see p. 2)
- ◇ Printed (and pre-cut if needed) shape (see p. 3)
- ◇ 2 fuzzy balls
- ◇ 2 googly eyes
- ◇ Glitter pens
- ◇ Scissors
- ◇ Glue


Christian Sarkine
Autism Treatment Center

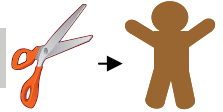
Christian Sarkine Autism
Treatment Center
Department of Child
and Adolescent Psychiatry
702 Barnhill Dr., Rm. 4300
Indianapolis, IN 46202
For referrals, call 317-274-8162
For research, call 317-274-8162
Other resources: call 317-274-8162
option "0"
www.iupui.edu/~psycdept/autism/
rileyhospital.org

Materials provided are **samples only!**
They may need to be individualized to meet the particular needs of a person with an ASD!

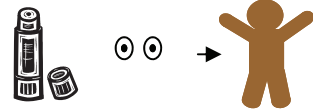


Time to Make a Gingerbread Man!

Cut out gingerbread man



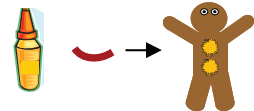
Glue two googly eyes to head



Glue two fuzzy balls to body



Draw mouth with red glitter pen



Choose two glitter pens



Decorate with glitter pens



Finished!

