

# KID'S CORNER



## 3 Season Paper Trees

It is time to make 3 season paper trees!

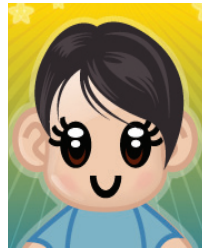
### First

Grown-up reads



### Then

I make



[www.handsinautism.org](http://www.handsinautism.org)  
[hands@iupui.edu](mailto:hands@iupui.edu)  
Tel: (317)274-8162

Select option "0"

### Suggestions for Grown-Ups

1. Laminate the schedule (*winter tree*: page 2, *spring tree*: page 3; or *fall tree*: page 4)
2. Place on a velcroed board (for pull-off schedules) or use a marker to mark finished steps (for check-off schedules).  
For more information, see **How-To Template: Schedules** ([www.handsinautism.org](http://www.handsinautism.org))
3. Help complete schedule steps if needed.
4. **Have fun!**

### You will need...

- ◇ Schedule (see p. 2, 3, or 4)
- ◇ Tree print-out (page 6)
- ◇ Scissors
- ◇ Glue

  
Christian Sarkine  
Autism Treatment Center

Christian Sarkine Autism  
Treatment Center  
Department of Child  
and Adolescent Psychiatry  
702 Barnhill Dr., Rm. 4300  
Indianapolis, IN 46202  
For referrals, call 317-274-8162  
For research, call 317-274-8162  
Other resources: call 317-274-8162  
option "0"  
[www.iupui.edu/~psycdept/autism/](http://www.iupui.edu/~psycdept/autism/)  
[rileyhospital.org](http://rileyhospital.org)

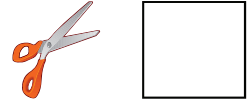
Materials provided are **samples only!**  
They may need to be individualized to meet the particular needs of a person with an ASD!



# Time to make a winter tree



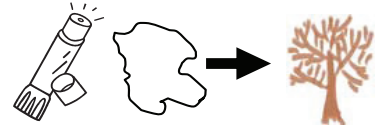
Cut out the white square shape



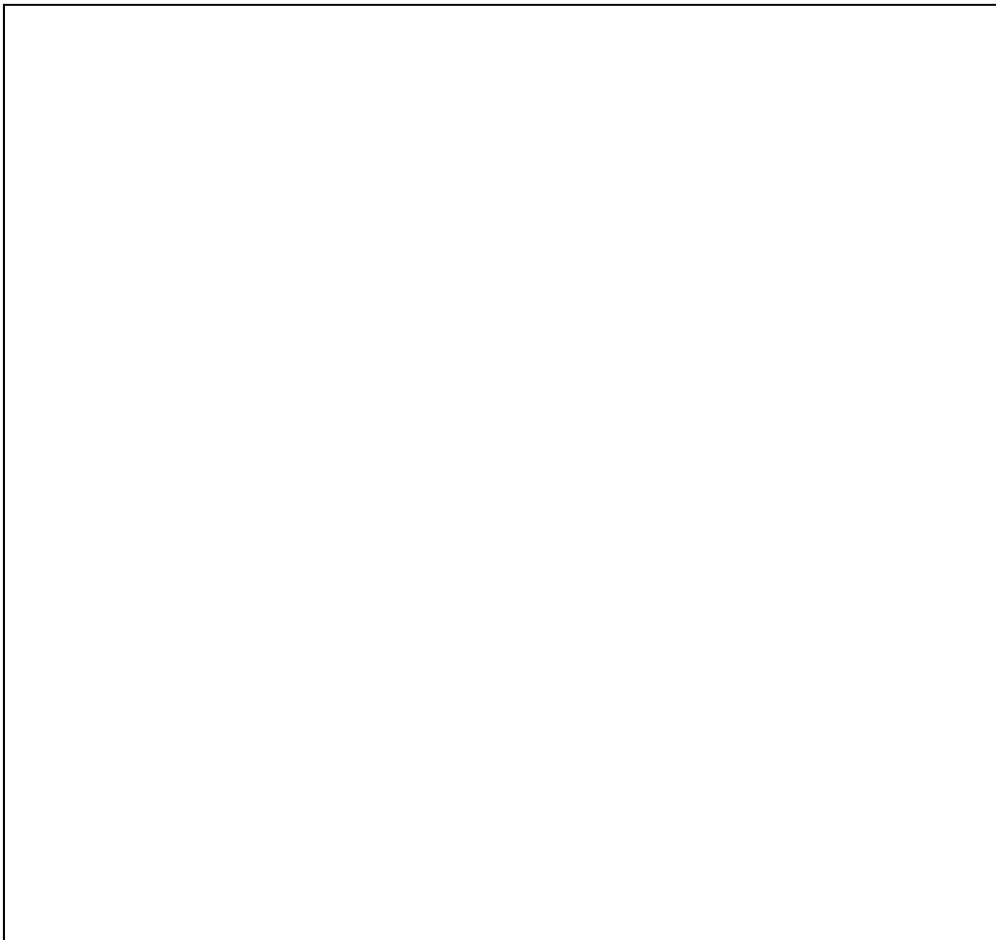
Tear the square shape into 10 pieces



Glue 10 pieces of paper onto the tree to make snow



**Finished!**

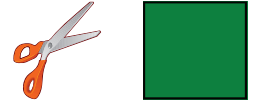




# Time to make a spring tree



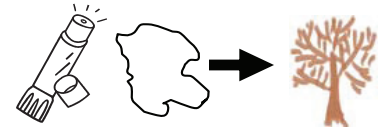
Cut out the green square shape



Tear the square shape into 10 pieces



Glue 10 pieces of paper onto the tree



**Finished!**





# Time to make a fall tree



Cut out green shape



Cut out yellow shape



Cut out orange shape



Tear green square into 5 pieces



Tear yellow square into 5 pieces



Tear orange square into 5 pieces



Glue all pieces of paper onto the tree



**Finished!**

